

stainless steel

Linear stainless steel slide for
food and packaging industry



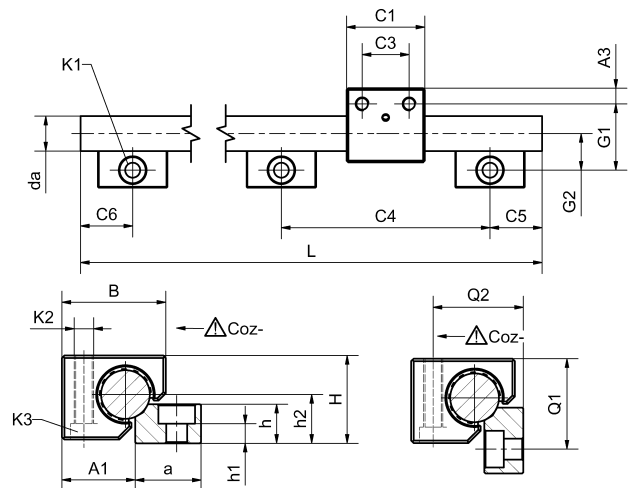
Order your free personal
igus® DryLin® W underwater
inspection kit now!



Single: DryLin® WK-ES-20

- Highest chemical resistance
- Highest corrosion resistance
- Highest temperature resistance up to 250°C*
- Resistant to PAA cleaning.
- Guide made from solid stainless steel 316 Ti (1.4571) X6CrNiMoTi17-12-2
- Plain bearings: iglidur® J or iglidur® X (250 °C)

Industries: Packaging, food and chemical industries as well as any underwater applications



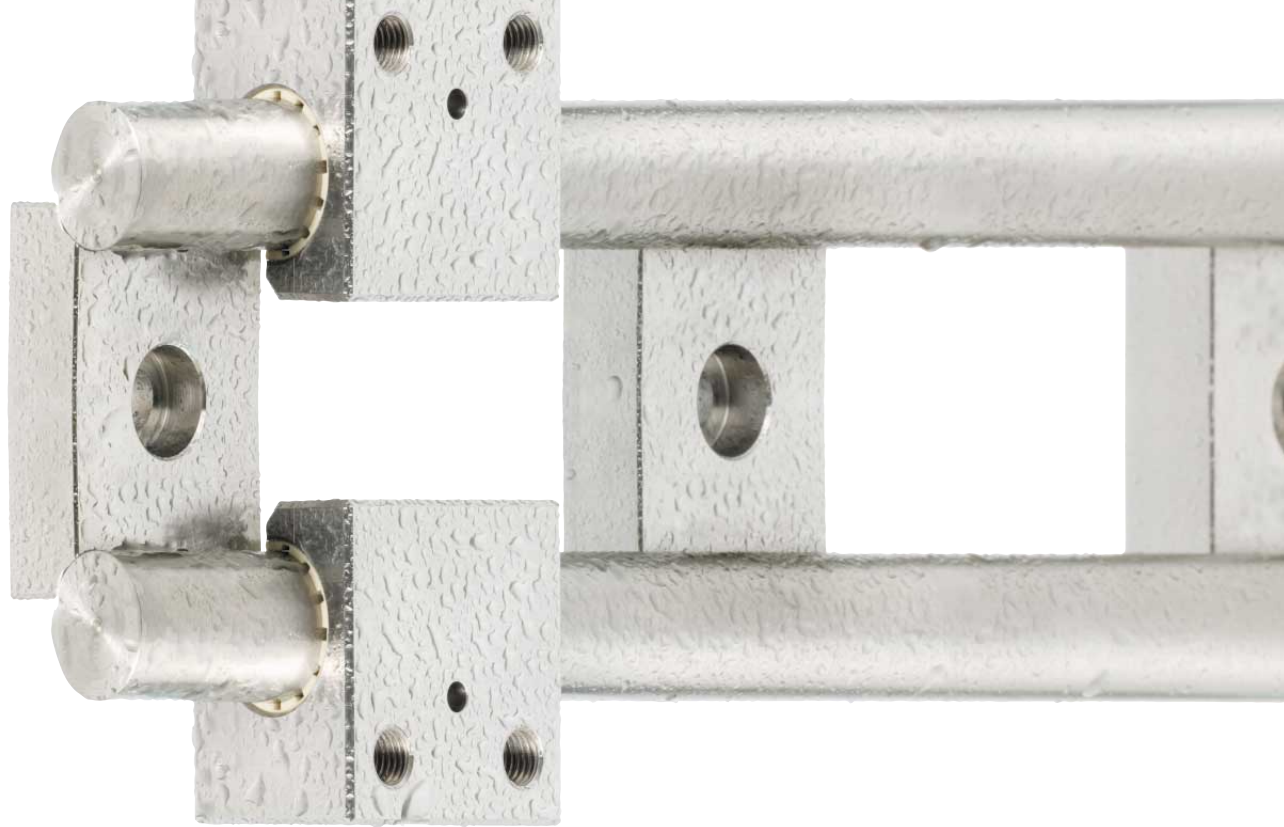
DryLin® W Guide rail, individually, ø 20 mm

Part No.	Suitable housing bearing [Part No.]	Weight [kg/m]	da [mm]	L Max. [mm]	a -0,3 [mm]	h [mm]	h2 [mm]	G2 [mm]			
WS-20-ES	WJUM-01-20-ES*	3,37	20	4000	27	16	20	21			
Part No.	C4 [mm]	C5 Min. [mm]	C5 Max. [mm]	C6 Min. [mm]	C6 Max. [mm]	K1 for Thread DIN 912	h1 [mm]	ly [mm²]	lz [mm²]	Wby [mm³]	Wbz [mm³]
WS-20-ES	120	20	79,5	20	79,5	M8	8	7854	7854	785	785

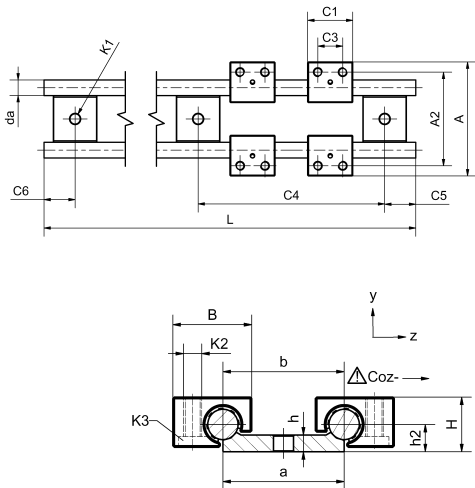
DryLin® W housing bearings

Part No.	Weight ±0,07 [g]	H [mm]	B [mm]	C1 [mm]	C3 [mm]	G1 [mm]	A3 [mm]	A1 [mm]	K2 [mm]	K3 countersunk screw [mm]	Q1 [mm]	Q2 [mm]	Stat. Load Capacity Coy [N]	Coz+ [N]	Coz- [N]
WJUM-01-20-ES*	280	36	42,5	45	27	38	9	30	M8	M6	37	37	11000	11000	1900

* optionally with liners XUM-01-20, page 64.10 in main 2007 bearings catalogue, available for high temperatures



Double: DryLin® WK-ES-10



Available as a \varnothing 10 mm double rail:

- Highest chemical resistance
- Highest corrosion resistance
- Highest temperature resistance up to 250°C
- Guide made from solid stainless steel 316 Ti (1.4571) X6CrNiMoTi17-12-2
- Plain bearings: iglidur® J or iglidur® X (250 °C)

Industries: Packaging, food and chemical industries as well as any underwater applications

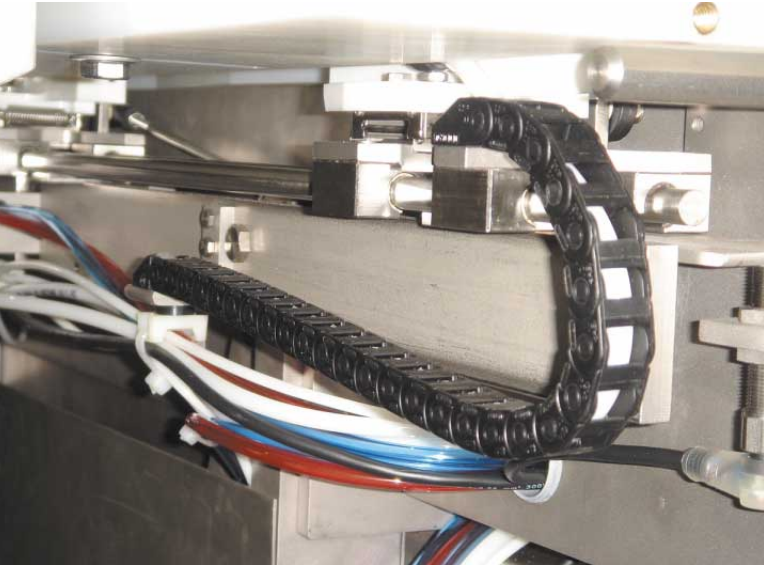
DryLin® W-Guide rail, double, \varnothing 10 mm

Part No.	Suitable housing bearing [Part No.]	Weight [kg/m]	da -0,1 [mm]	L Max. [mm]	a -0,3 [mm]	b [mm]	h [mm]	h2 [mm]
WS-10-40-ES	WJUM-01-10	1,58	10	4000	40	40	5,5	9
Part No.	C4 [mm]	C5 Min. [mm]	C5 Max. [mm]	C6 Min. [mm]	C6 Max. [mm]	K1 for Screw DIN 912		
WS-10-40-ES	120	20	79,5	20	79,5	M6		

DryLin® W housing bearings

Part No.	Weight [g]	H $\pm 0,07$ [mm]	B [mm]	C1 [mm]	C3 [mm]	A [mm]	A2 [mm]	K2 [mm]	K3 countersunk-head screw	Stat. Load Capacity [N]		
										Coy	Coz+	Coz-
WJUM-01-10-ES	57	18	26	29	16	73	60	M6	M5	3800	3800	950

DryLin® W Stainless in use



AEW Delford Systems design and manufacture machines for slicing and packaging meats. The photo-



graphs show a bacon slicing and packaging machine fitted with the DryLin® W-ES Stainless bearing system.

There are two carriage plates with 4 bearings at each end of the rail. The drive is attached to the unit by an igus KARM-16 igubal® rod end bearing.

The DryLin® W-ES linear system picks up one card at a time, then travels to the centre of the machine, at which point a laser sensor checks that the sleeve is in the correct position. The bacon packaging card is then pushed into position and the linear system returns to the end of the rail to repeat the operation. Each carriage carries 40 cards per minute, with a 415 mm stroke under a typical load of 1 kg, and functions for 12 hours per day.

For this industry, only stainless steel can be used for hygiene reasons. Wherever possible 316 Stainless is used, as the machines undergo a daily cleaning operation with deter-

gents and water. Before speaking with igus®, the company had been specifying a product from a well known rolling element linear slide manufacturer, but with wash-downs occurring every day, this system required regular maintenance, whereas the igus DryLin® W-ES system did not. The DryLin® W-ES system can be easily maintained by simply replacing the bearing liners. This gives substantial long term cost savings. The igus® system is totally 316Ti Stainless with solid polymer bearing liners.

Lee Wilkins, Product Manager for the DryLin® range in the UK, was involved in the application, "The stainless DryLin® W system was exactly what AEW Delford were looking for. It has now been fitted to machines which are in use throughout the world".

Your catalogue

Over 9,600 products – the standard reference for igus® polymer plain bearings

- Handy DIN A5 size
- Greater selection and more accessories
- More solutions and practical tips
- Quick web links (3D CAD data, configurators, downloads in PDF downloads)



E-Chains® and -Systems® ReadyChain® Chainflex® special cables iglidur® igubal® DryLin® plain bearings

51A Caswell Road, Brackmills,
Northampton NN4 7PW

Tel: 01604 677240 Fax: 01604 677245

igus®.co.uk
plastics for longer life®